

Troubleshooting Guide

Before You Begin, Note the Following Steps:

1

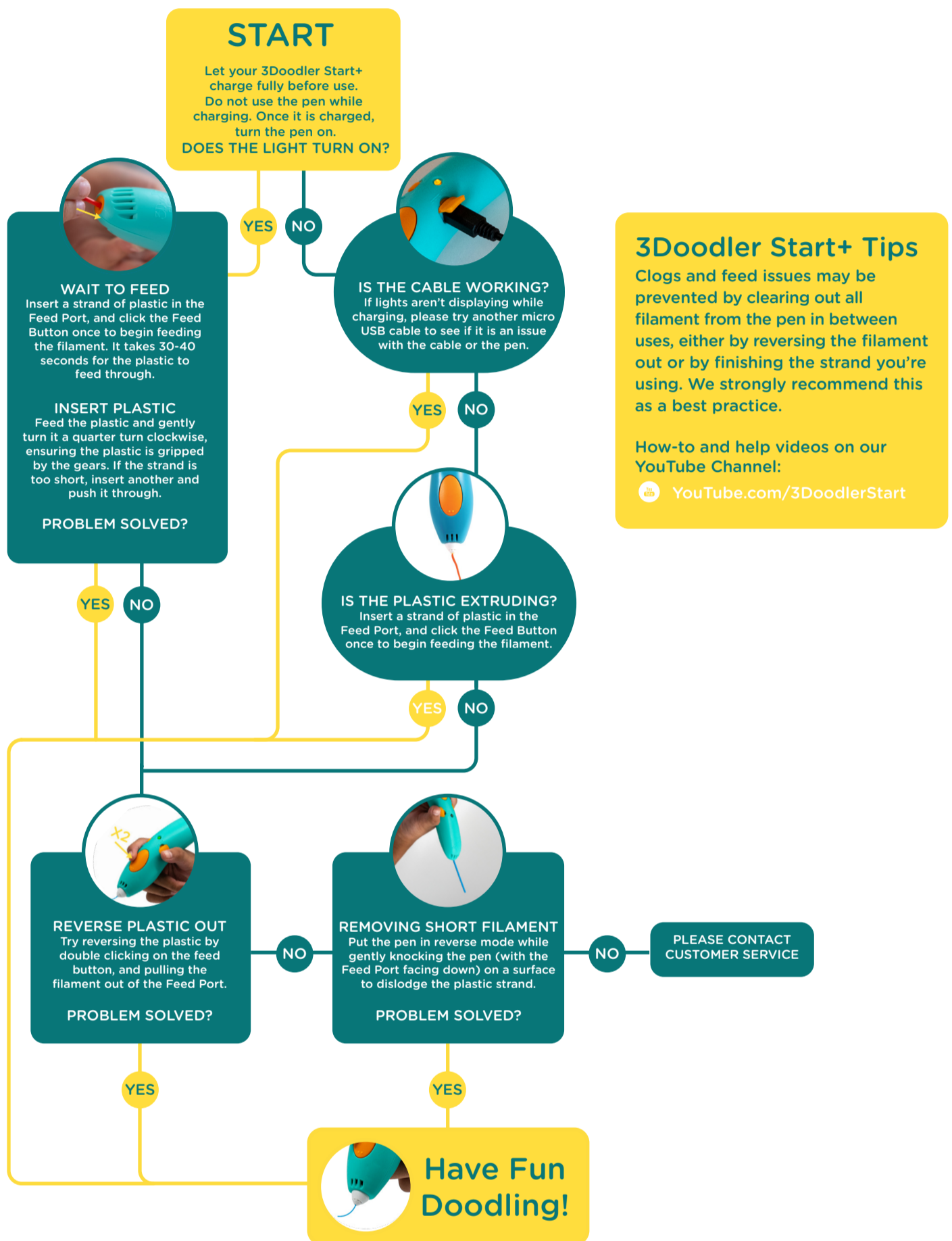
Begin by charging your 3Doodler Start+ to ensure the motor is able to run at full power. This will take 45 minutes to 2 hours. Do not use the 3Doodler Start+ while charging. The light will flash orange while charging, and will turn solid orange once it is fully charged.

2

Once you turn the pen on, and click the feed button, it takes 30-40 seconds for extrusion to begin after first inserting a plastic strand.

3

Push the plastic down the pen and gently twist it clockwise to get it to engage with the pen's gears. You will feel it lock into place.



LED Lights Cheat Sheet

LED LIGHT COLOR	RED	GREEN	ORANGE
SOLID	Your pen is warming up	Pen is idle	Pen is fully charged
SLOWLY FLASHING	Please Contact Customer Service	Plastic is feeding	Your Pen is low on battery
QUICKLY FLASHING	Please Contact Customer Service	Plastic is reversing	Pen charging

Still having issues?

✉ help@the3Doodler.com

☎ (US) 718.618.9904

Please have your serial number ready for us. You can find it printed on the bottom of your pen.