

Quick Setup

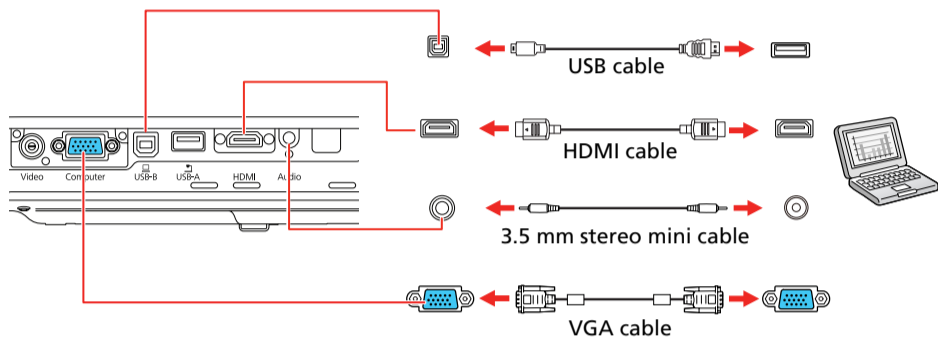
Before using the projector, make sure you read the safety instructions in the online *User's Guide*.

Note: Your product may differ from the illustrations on this sheet, but the instructions are the same.

Connect the projector

Choose from the following connections. See the sections below or the online *User's Guide* for details.

Computer



Computer port

Connect one end of a VGA cable to the projector's **Computer** port, and the other end to your laptop or computer's monitor port. Make sure to switch your laptop to external display (see "Troubleshooting" on the back of this sheet). You can also connect an audio cable.

HDMI port

Connect one end of an HDMI cable to the projector's **HDMI** port and the other end to an HDMI port on your computer.

Note: To connect a Mac that includes only a Mini DisplayPort or Mini-DVI port for video output, you need to obtain an adapter that allows you to connect to the projector's HDMI port. Contact Apple for compatible adapter options. Older Mac computers (2009 and earlier) may not support audio through the HDMI port.

USB port

Connect the square end of a USB cable to the projector's **USB-B** (square) port. Connect the flat end of the cable to any USB port on your computer.

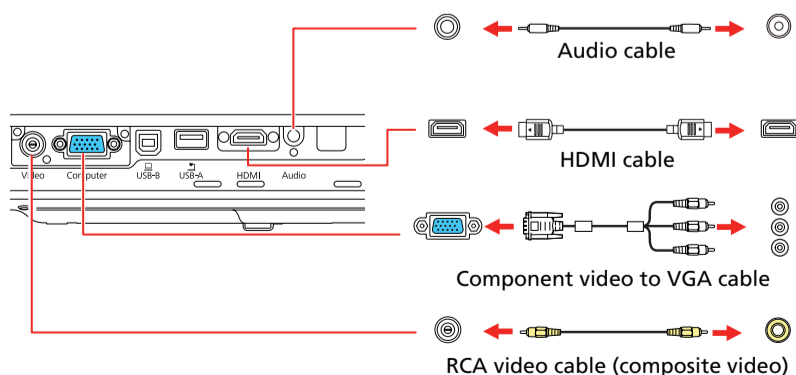
Windows Vista® or later: After turning on the projector, follow the on-screen instructions to install the Epson® USB Display software (**EMP_UDSE.EXE**; only on first connection). If the software screen does not display automatically, open **My Computer** or **Computer**, then double-click **EPSON_PJ_UD**.

OS X 10.7.x - 10.11.x: After turning on the projector, the setup folder for USB Display appears in the Finder. Double-click **USB Display Installer** and follow the on-screen instructions to install the Epson USB Display software (only on first connection).

Note: If you have problems installing the USB Display software, make sure the **USB Type B** setting in the projector's **Extended** menu is set to **USB Display**. See the online *User's Guide* for instructions.

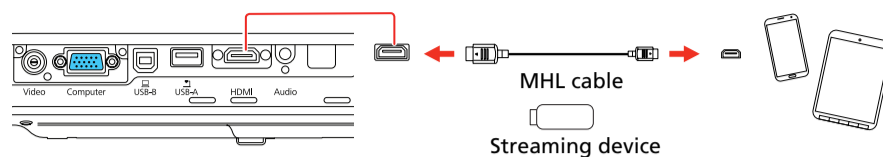
Video device

Connect multiple video devices and use the **Source Search** button on the projector or the remote control to switch between them.



Mobile media device

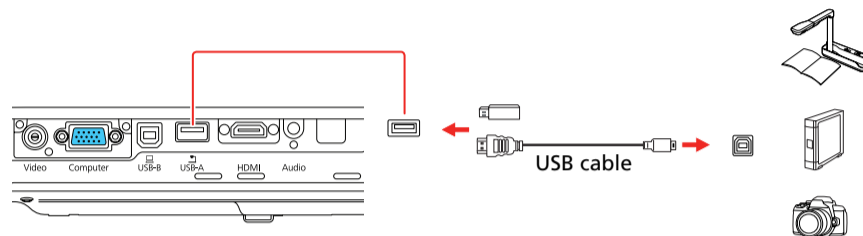
Connect tablets, smartphones, and other devices that support the MHL™ standard to the **HDMI** port.



Some devices may require an adapter or may not require an MHL cable. Not all features or functions may be supported. Check your device's documentation for more information.

Camera, USB device, or document camera

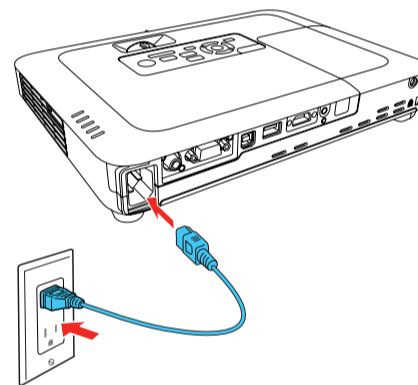
Connect a digital camera, USB flash drive, USB storage device, or Epson DC-07 document camera to the projector's **USB-A** (flat) port.



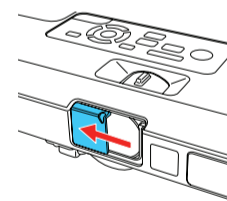
If you connect a digital camera, USB flash drive, or USB storage device, you can use the projector's PC Free feature. You can also connect Epson document cameras to the projector. See the online *User's Guide* for details.

Turn on your equipment

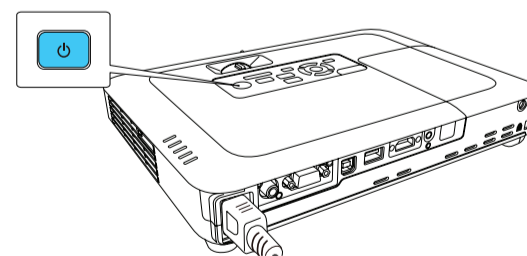
- 1 Turn on your computer or video source.
- 2 Plug in the projector. The power light on the projector turns blue.



- 3 Open the **A/V Mute** slide all the way.



- 4 Press the power button on the projector or remote control. The projector beeps, the Status light flashes blue, and then stays on.



Note: To shut down the projector, press the power button twice, then unplug it. You don't have to wait for the projector to cool down.



- Use the arrow buttons on the remote control to highlight any of the options on the Home screen that appears, then press \leftarrow/\rightarrow to select it. You can display a QR code, switch between projection sources, and quickly access various adjustment options from this screen.



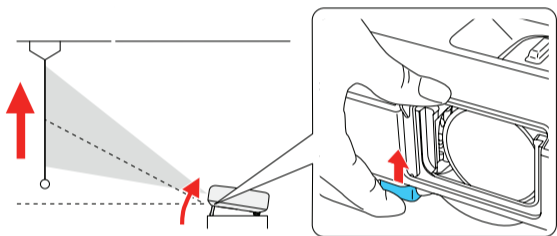
- The default language of the menu system is English. To select another language, press the **Menu** button on the projector or remote control. Select **Extended** and press \leftarrow/\rightarrow . Select **Language** and press \leftarrow/\rightarrow . Select your language and press \leftarrow/\rightarrow . Press the **Menu** button to exit the menu system.

Adjust the image

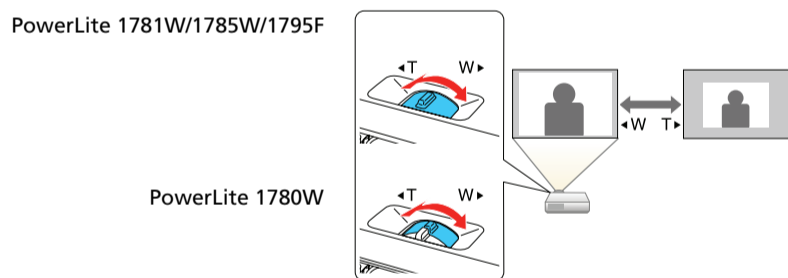
- If you don't see an image, press the **Source Search** button on the projector or the remote control to select the image source.

Note: If you still see a blank screen or have other display problems, see the troubleshooting tips on the back of this sheet.

- To raise the image, press the foot release button and lift the front of the projector. Release the button to lock the foot in position.

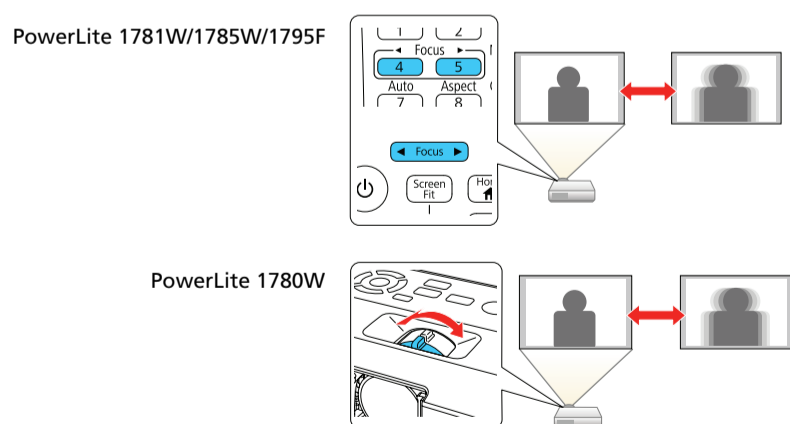




- To reduce or enlarge the image, turn the zoom ring.





- PowerLite 1781W/1785W/1795F:** To sharpen the image, press the **Focus** buttons on the projector or remote control.

PowerLite 1780W: To sharpen the image, turn the Focus ring.

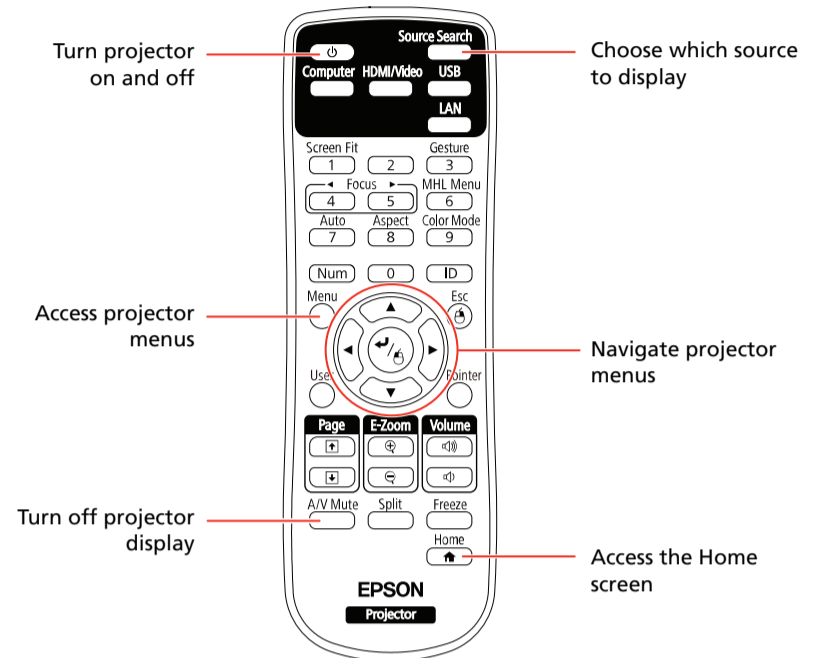
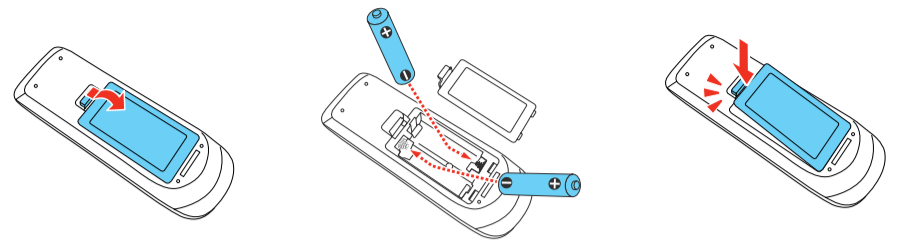


- If your image looks like  or , you may have placed the projector off to one side of the screen at an angle. Place the projector directly in front of the center of the screen, facing the screen squarely. If you can't move the projector, use the keystone buttons on the projector to correct the image shape.

- Your projector automatically adjusts images that look like  or , but if necessary you can press the ∇ or \triangle button on the projector to correct it.

Using the remote control

Install the batteries as shown (two AA batteries).



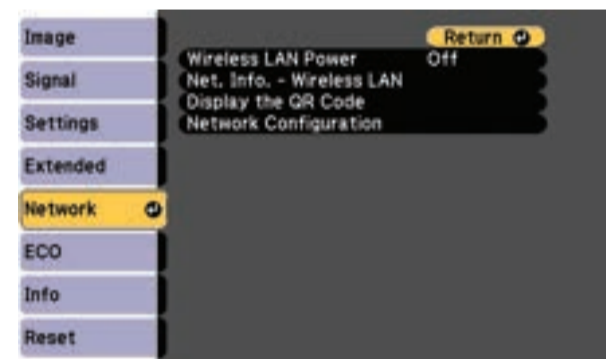
For more information on using the remote control, see the online *User's Guide*.

Project wirelessly

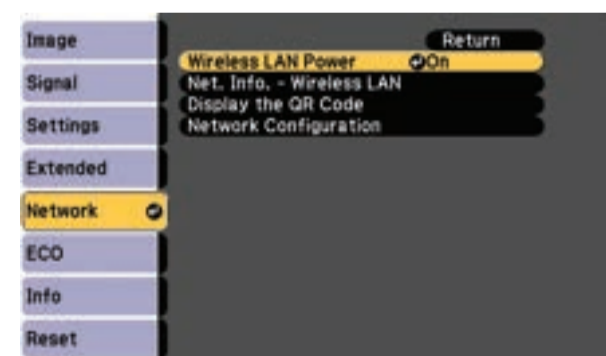
Follow the steps here to connect the projector over a wireless network.

If you're projecting from a computer, it must have a wireless card or built-in wireless interface.

- Press the **Menu** button on the remote control, select the **Network** menu, and press \leftarrow/\rightarrow .

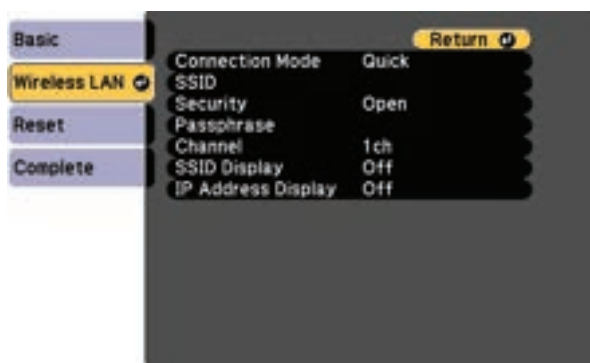


- Select **On** as the **Wireless LAN Power** setting.



3 Choose **Network Configuration** and press ↵.

4 Select the **Wireless LAN** menu and press ↵.



5 Choose **Connection Mode**, press ↵, select **Quick** for a direct connection to a computer, tablet, or smartphone, then press ↵ again. When you're finished, press **Esc** to return to the Wireless LAN menu.

Note: For instructions on setting up an Advanced connection for a connection to a router or access point, see the online User's Guide.

6 To prevent the SSID and IP address from appearing on the network standby screen, set the **SSID Display** and **IP Address Display** settings to **Off**.

7 When you're finished selecting settings in the Wireless LAN menu, press **Esc**.

8 Select **Complete** and press ↵, then select **Yes** and press ↵ again to save your settings.

Install network software

Links to download the network software and to the manuals are available from the projector CD. Downloads require an Internet connection. You can also download the software and manuals from the Epson website, as described in "Where to get help".

To project from multiple PCs over the network, install the EasyMP® Multi PC Projection software.

Click the icons on your desktop to view the software manuals. See the manuals for instructions on installing and using the software.

Project wirelessly from a mobile device

You can connect your mobile device and projector using Epson iProjection™ and a QR code. Make sure the latest version of Epson iProjection is installed on your device.

Install the Epson iProjection app

To project from an iOS or Android™ device, download and install the Epson iProjection app. Visit epson.com/projectorapp (U.S.) or epson.ca/projectorapp (Canada) for more information.



Direct wireless connection

Make sure your device and Epson projector are not connected to a network and your Epson projector's **Connection Mode** is set to **Quick**.

1 Press the **Home** button on the projector or remote control to bring up the Home screen.

2 Select **Display the QR Code** and press ↵.

3 Tap **iProjection** on your device's Home screen.



4 Tap **Read QR code**.

5 Point your device's camera at the QR code your projector displays; the QR code is read automatically.

6 If you are using an iOS device, follow the on-screen prompts to register your projector's Wi-Fi profile.

Your device and Epson projector are now connected.

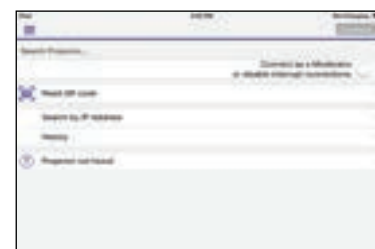
Wireless network connection

Make sure your projector and mobile device are connected to the same wireless network.

1 Press the **Home** button on the projector or remote control to bring up the Home screen.

2 Select **Display the QR Code** and press ↵.

3 Tap **iProjection** on your device's Home screen.



4 Tap **Read QR code**.

5 Point your device's camera at the QR code your projector displays; the QR code is read automatically.

Your device and Epson projector are now connected.

Troubleshooting

If you see a blank screen or the **No signal** message after turning on your computer or video device, check the following:

- Make sure the Status light on the projector is blue and not flashing, and the A/V Mute slide is open.
- Press the **Source Search** button on the projector or the remote control to switch to the correct image source, if necessary.
- Press the **Home** button on the projector or remote control to verify the source input and settings.
- On Windows® 7 or later, hold down the Windows key and press **P** at the same time, then click **Duplicate**.
- If you're using a Windows laptop, press the function key on your keyboard that lets you display on an external monitor. It may be labeled **CRT/LCD** or have an icon such as . You may have to hold down the **Fn** key while pressing it (such as **Fn + F7**). Wait a moment for the display to appear.
- If you're using a Mac laptop, open **System Preferences** and select **Displays**. Click the **Arrangement** tab and select the **Mirror Displays** checkbox.

Where to get help

Manuals

For more information about using the projector, click the icons on your desktop to access the online manuals (requires an Internet connection). If you don't see icons to the manuals, you can install them from the projector CD or go to the Epson website, as described in "Internet support".

Telephone support services

To use the Epson PrivateLine® Support service, call (800) 637-7661. This service is available for the duration of your warranty period. You may also speak with a support specialist by calling (562) 276-4394 (U.S.) or (905) 709-3839 (Canada).

Support hours are 6 AM to 8 PM, Pacific Time, Monday through Friday, and 7 AM to 4 PM, Pacific Time, Saturday. Days and hours of support are subject to change without notice. Toll or long distance charges may apply.

Internet support

Visit www.epson.com/support (U.S.) or www.epson.ca/support (Canada) for solutions to common problems. You can download utilities and documentation, get FAQs and troubleshooting advice, or e-mail Epson.

Registration

Register today to get product updates and exclusive offers. You can use the CD included with your projector or register online at www.epson.com/webreg.

Optional accessories

For a list of optional accessories, see the online *User's Guide*.

You can purchase screens or other accessories from an Epson authorized reseller. To find the nearest reseller, call 800-GO-EPSON (800-463-7766). Or you can purchase online at www.epsonstore.com (U.S. sales) or www.epson.ca (Canadian sales).

Wireless notice

Contains wireless LAN module model: WN7122BEP (PowerLite 1780W/1781W/1785W/1795F), WLU5000-D101 (RoHS) (PowerLite 1785W/1795F)

This document provides safety instructions and describes the specifications. Read this document carefully before use to ensure your safety and product performance.

Data transmission is always initiated by software, which is the passed down through the MAC, through the digital and analog baseband, and finally to the RF chip. Several special packets are initiated by the MAC. These are the only ways the digital baseband portion will turn on the RF transmitter, which it then turns off at the end of the packet. Therefore, the transmitter will be on only while one of the aforementioned packets is being transmitted. In other words, this device automatically discontinues transmission in case of either absence of information to transmit or operational failure.

This equipment is restricted to indoor operation only.

U.S.

Contains FCC ID: BKMAE-7122 (PowerLite 1780W/1781W/1785W/1795F), BKMAE-WLU5000 (PowerLite 1785W/1795F)

This device complies with Part 15 of the FCC Rules. Operation is subject to the following two conditions: (1) This device may not cause harmful interference, and (2) this device must accept any interference received, including interference that may cause undesired operation.

This equipment has been tested and found to comply with the limits for a Class B digital device, pursuant to Part 15 of the FCC Rules. These limits are designed to provide reasonable protection against harmful interference in a residential installation. This equipment generates, uses and can radiate radio frequency energy and, if not installed and used in accordance with the instructions, may cause harmful interference to radio communications. However, there is no guarantee that interference will not occur in a particular installation. If this equipment does cause harmful interference to radio or television reception, which can be determined by turning the equipment off and on, the user is encouraged to try to correct the interference by one of the following measures:

- Reorient or relocate the receiving antenna.
- Increase the separation between the equipment and receiver.
- Connect the equipment into an outlet on a circuit different from that to which the receiver is connected.
- Consult the dealer or an experienced radio/TV technician for help.

Caution: Changes or modifications not expressly approved by the party responsible for compliance could void the user's authority to operate this equipment. Properly shielded and grounded cables and connectors must be used for connection to host computers and/or peripherals in order to meet FCC emission limits.

This transmitter must not be co-located or operating in conjunction with any other antenna or transmitter.

This equipment complies with FCC radiation exposure limits set forth for an uncontrolled environment and meets the FCC radio frequency (RF) Exposure Guidelines. This equipment should be installed and operated keeping the radiator at least 7.8 inches (20 cm) or more away from person's body.

Canada

Contains IC: 1052D-7122 (PowerLite 1780W/1781W/1785W/1795F), 1052D-WLU5000 (PowerLite 1785W/1795F)

CAN ICES-3 (B)/NMB-3 (B)

This device complies with Industry Canada's licence-exempt RSSs. Operation is subject to the following two conditions: (1) This device may not cause interference; and (2) This device must accept any interference, including interference that may cause undesired operation of the device.

This equipment complies with IC radiation exposure limits set forth for an uncontrolled environment and meets RSS-102 of the IC radio frequency (RF) Exposure rules. This equipment should be installed and operated keeping the radiator at least 7.8 inches (20 cm) or more away from person's body.

EPSON
EXCEED YOUR VISION



EPSON, EasyMP, and PowerLite are registered trademarks, Epson iProjection is a trademark, and EPSON Exceed Your Vision is a registered logomark of Seiko Epson Corporation. PrivateLine is a registered trademark of Epson America, Inc.

Mac and OS X are trademarks of Apple Inc., registered in the U.S. and other countries.

Android is a trademark of Google Inc.

General Notice: Other product names used herein are for identification purposes only and may be trademarks of their respective owners. Epson disclaims any and all rights in those marks.

This information is subject to change without notice.

© 2016 Epson America, Inc., 10/16

CPD-52787